

Disney
MOANA

NOVEMBER 23

IN 3D AND REAL D 3D



PG

©DISNEY

Disney
MOANA

NOVEMBER 23

IN 3D AND REAL D 3D



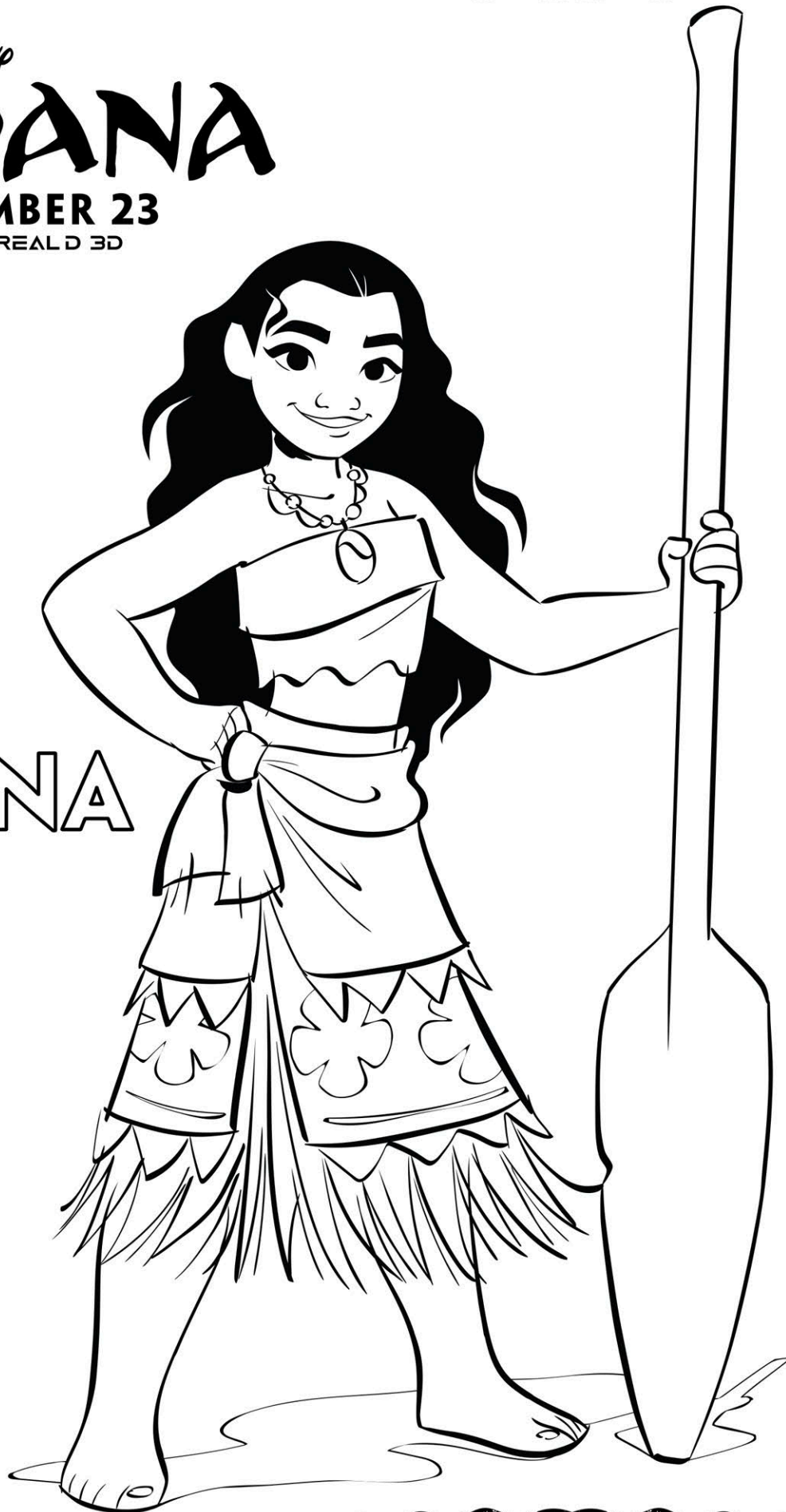
MAUI

Disney
MOANA

NOVEMBER 23

IN 3D AND REAL D 3D

MOANA

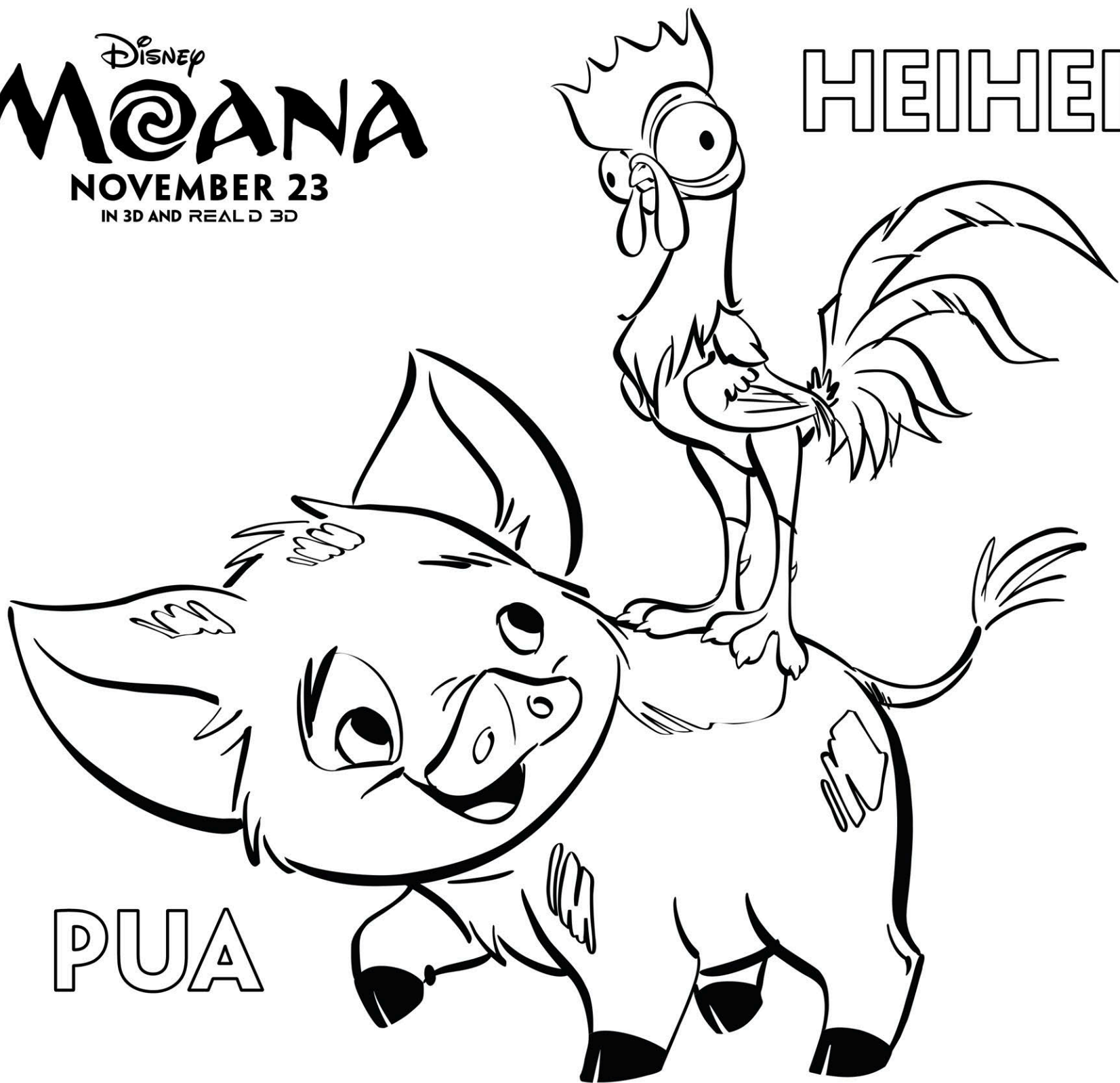


MPAA RATING
PG

©DISNEY

Disney
MOANA
NOVEMBER 23
IN 3D AND REAL D 3D

HEIHEI



PUA

Disney
MOANA
NOVEMBER 23
IN 3D AND REAL D 3D



PG

©DISNEY

Disney
MOANA

NOVEMBER 23

IN 3D AND REAL D 3D

HELP MOANA FIND MAUI



MEMORY MATCH

Have an adult cut out the cards from all six pages. Fold each card on the indicated line and glue or tape the inside to make a two-sided card with the logo on one side and the character on the other. Place the cards character side down on a smooth surface and mix them up. Turn over two cards at a time to see if they match. If they don't, turn them face down again. Take turns turning over cards using your memory to recall where a matching card may be located. The person who matches the most pairs wins!



FOLD

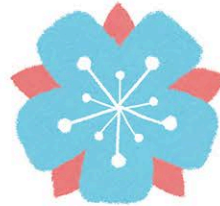
Disney
MOANA
NOVEMBER 23
IN 3D AND REAL D 3D



FOLD



Disney
MOANA
NOVEMBER 23
IN 3D AND REAL D 3D



Disney
MOANA
NOVEMBER 23
IN 3D AND REAL D 3D

FOLD



FOLD

Disney
MOANA
NOVEMBER 23
IN 3D AND REAL D 3D



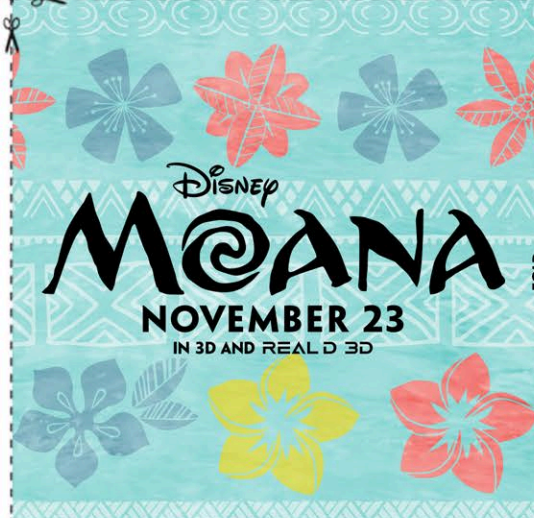
FOLD

MEMORY MATCH

Have an adult cut out the cards from all six pages. Fold each card on the indicated line and glue or tape the inside to make a two-sided card with the logo on one side and the character on the other. Place the cards character side down on a smooth surface and mix them up. Turn over two cards at a time to see if they match. If they don't, turn them face down again. Take turns turning over cards using your memory to recall where a matching card may be located. The person who matches the most pairs wins!



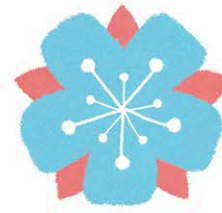
FOLD



FOLD



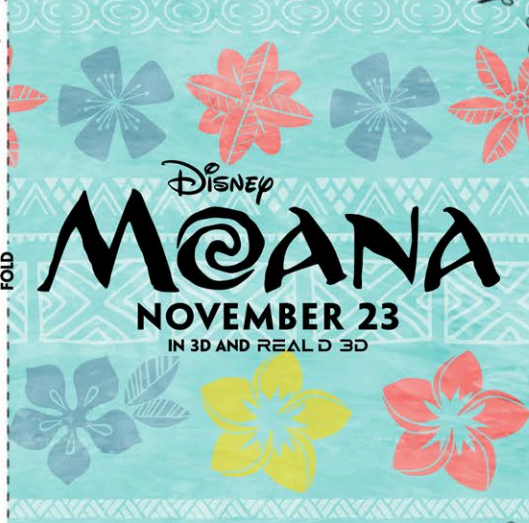
FOLD



FOLD



FOLD



MEMORY MATCH

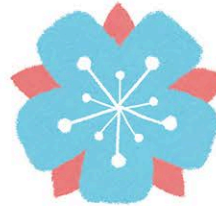
Have an adult cut out the cards from all six pages. Fold each card on the indicated line and glue or tape the inside to make a two-sided card with the logo on one side and the character on the other. Place the cards character side down on a smooth surface and mix them up. Turn over two cards at a time to see if they match. If they don't, turn them face down again. Take turns turning over cards using your memory to recall where a matching card may be located. The person who matches the most pairs wins!



FOLD



FOLD



FOLD



FOLD

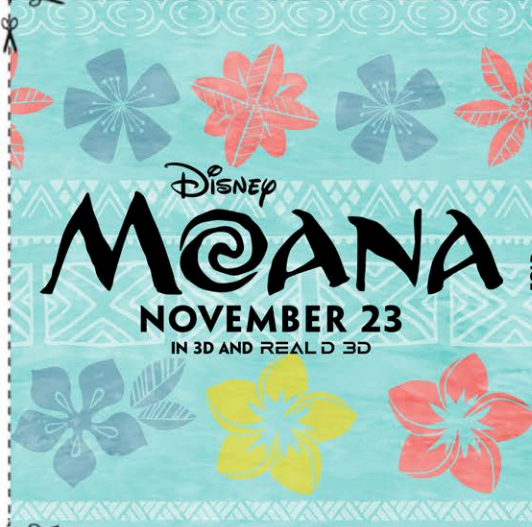


MEMORY MATCH

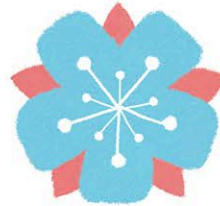
Have an adult cut out the cards from all six pages. Fold each card on the indicated line and glue or tape the inside to make a two-sided card with the logo on one side and the character on the other. Place the cards character side down on a smooth surface and mix them up. Turn over two cards at a time to see if they match. If they don't, turn them face down again. Take turns turning over cards using your memory to recall where a matching card may be located. The person who matches the most pairs wins!



FOLD



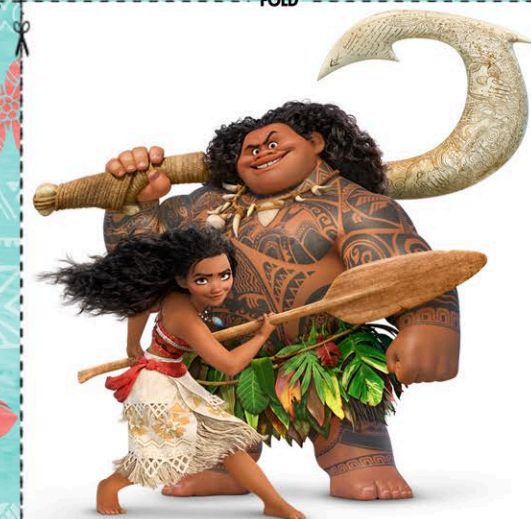
FOLD



FOLD



FOLD



MEMORY MATCH

Have an adult cut out the cards from all six pages. Fold each card on the indicated line and glue or tape the inside to make a two-sided card with the logo on one side and the character on the other. Place the cards character side down on a smooth surface and mix them up. Turn over two cards at a time to see if they match. If they don't, turn them face down again. Take turns turning over cards using your memory to recall where a matching card may be located. The person who matches the most pairs wins!



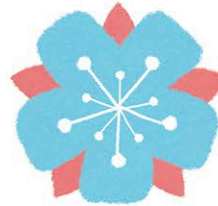
FOLD

Disney
MOANA
NOVEMBER 23
IN 3D AND REAL D 3D

FOLD



Disney
MOANA
NOVEMBER 23
IN 3D AND REAL D 3D



Disney
MOANA
NOVEMBER 23
IN 3D AND REAL D 3D

FOLD



FOLD

Disney
MOANA
NOVEMBER 23
IN 3D AND REAL D 3D

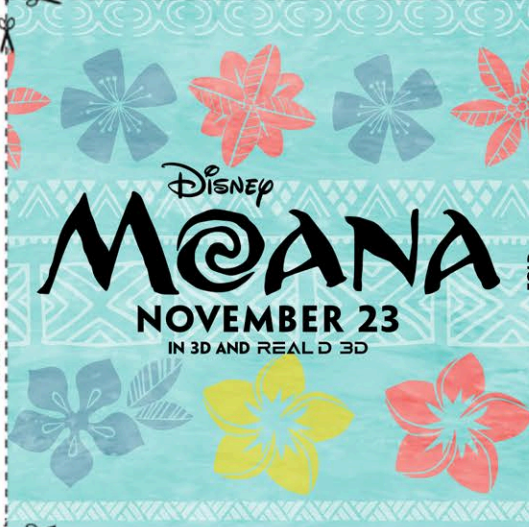


MEMORY MATCH

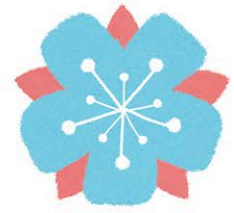
Have an adult cut out the cards from all six pages. Fold each card on the indicated line and glue or tape the inside to make a two-sided card with the logo on one side and the character on the other. Place the cards character side down on a smooth surface and mix them up. Turn over two cards at a time to see if they match. If they don't, turn them face down again. Take turns turning over cards using your memory to recall where a matching card may be located. The person who matches the most pairs wins!



FOLD



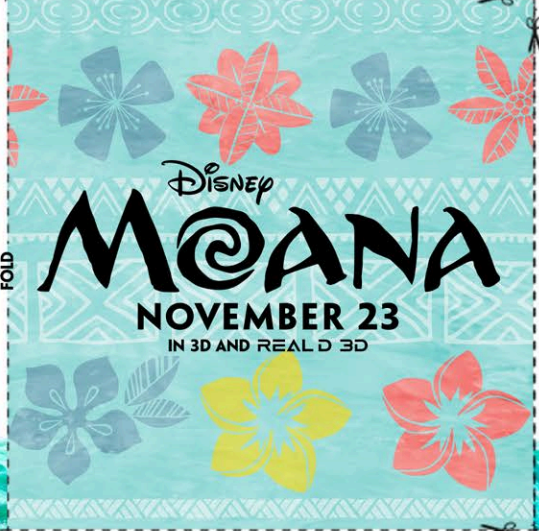
FOLD



FOLD



FOLD



FOLD

MOANA BOOKMARKS

HAVE AN ADULT HELP YOU CUT OUT THE BOOKMARK ALONG THE DOTTED LINES. FOLD THE BOOKMARK IN HALF USING SOME GLUE TO SECURE THE SIDES TOGETHER.



MOANA

x

Disney
MOANA
NOVEMBER 23
IN 3D AND REAL D 3D

MOANA

Disney
MOANA
NOVEMBER 23
IN 3D AND REAL D 3D

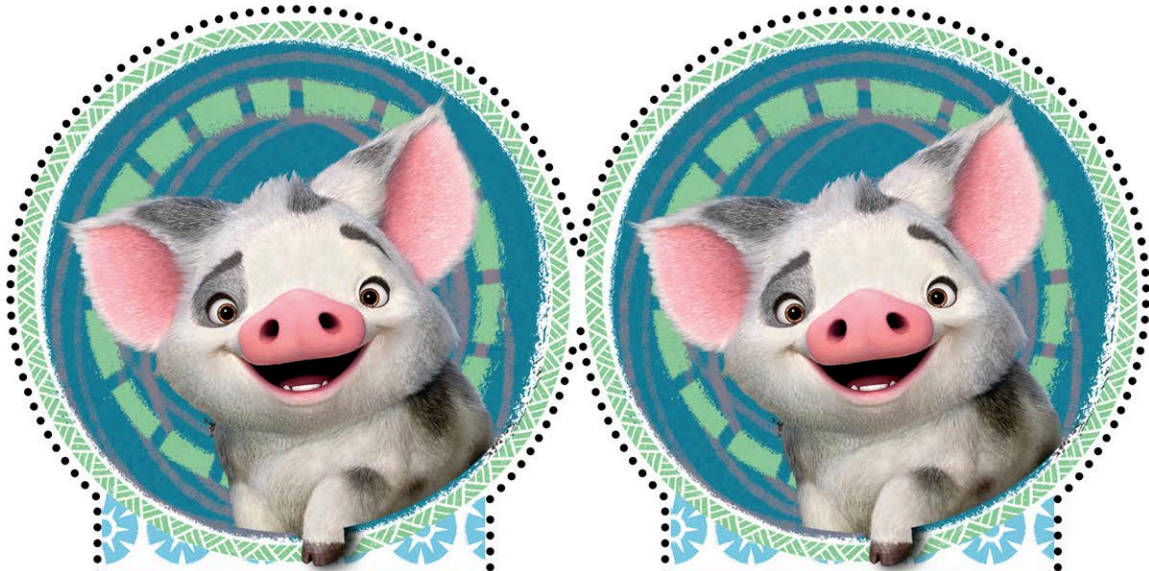
MOANA BOOKMARKS

HAVE AN ADULT HELP YOU CUT OUT THE BOOKMARK ALONG THE DOTTED LINES. FOLD THE BOOKMARK IN HALF USING SOME GLUE TO SECURE THE SIDES TOGETHER.



MOANA BOOKMARKS

HAVE AN ADULT HELP YOU CUT OUT THE BOOKMARK ALONG THE DOTTED LINES. FOLD THE BOOKMARK IN HALF USING SOME GLUE TO SECURE THE SIDES TOGETHER.



✂

Disney
MOANA

NOVEMBER 23
IN 3D AND REAL D 3D

Disney
MOANA

NOVEMBER 23
IN 3D AND REAL D 3D

PG

©DISNEY

MOANA BOOKMARKS

HAVE AN ADULT HELP YOU CUT OUT THE BOOKMARK ALONG THE DOTTED LINES. FOLD THE BOOKMARK IN HALF USING SOME GLUE TO SECURE THE SIDES TOGETHER.



PG

©DISNEY